



Quick start guide

Sail through the Sentinel Domotics setup process

Congratulations on purchasing your Sentinel Domotics kit.

This user manual will provide everything you need to know to get you up and running.
For more detailed information, please visit our website at www.yacht-sentinel.com.

Table of Contents

What's in the box?	4
Activate your account	5
Power up your devices	6
Testing	15
Help and support	16
Disclaimer	16

What's in the box?



NMEA gateway



W2K



Power plug



Micro USB to USB
(power cable)



Ethernet cable

Optional Depending On Your Package



External
antenna



Wifi modem +
standard antennas

Activate your account

(if you already have a YS hub account, go directly to step 3)

1

Download the App

You will first need to download the Yacht Sentinel Hub app. You can do this by visiting the Google Play store, iOS app store or by scanning the QR code.



2

Existing user only

If you already have an account with us and would like to pair your Sentinel Domotics kit to an existing account, follow the following sets:

1. Login and click the gear icon located on the bottom right of the page.
2. Select 'Manage boats' and then 'add boat' the left-hand side. Enter in your boat name & Sentinel Domotics product code, then select the check box 'Sentinel Domotics'.

3

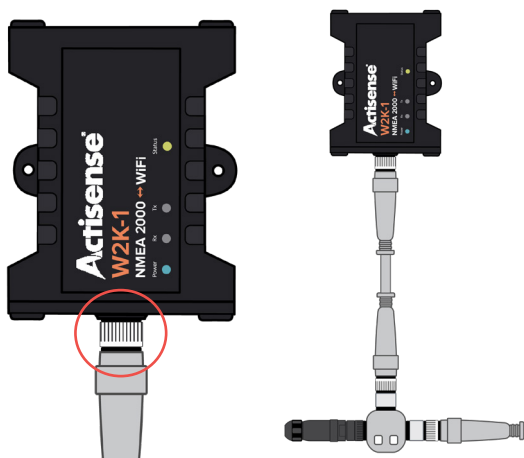
New users only

Open the app and click 'Activate your account'. Select 'Package includes YS6' if the package you purchased include a Yacht Sentinel 6. Otherwise select 'Sentinel Domotics product code' and enter in the product code shown on the top of your 'NMEA Gateway'.

Power up your devices

1 Power up your W2K

- The W2K connects directly into the NMEA bus on your boat. The NMEA bus will provide power and information from any other NMEA product connected to it.
- DO NOT twist the body of the W2K when connecting it to the NMEA bus. Once both notches line up correctly, push and slowly twist the silver ring on the W2K. The W2K will then light up once activated.
- Align notch with NMEA bus and twist silver ring to connect securely.



Note:

If you are using a Raymarine NMEA system you may need to purchase an adapter called 'Raynet'. If you are using a Simrad system you will need to purchase a 'Sim net' adapter. These adapters can be purchased separately from any marine supply store.

2 Turn on your NMEA network

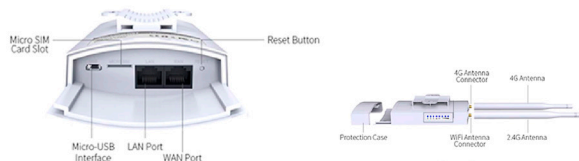
- A green light on the W2K will light up once NMEA network is ON.



1. Using Yacht Sentinel Wi-Fi Marina router

3 Power up the Wi-Fi Router

- If you have purchased YS Wi-Fi modem with standard antennas, then you will simply need to attach the antennas to the top of the router itself.
- If you purchased the more powerful external antenna, attach the white antenna to the top of the WiFi router marked '2.4ghz', and the cable coming from the external antenna where it is marked '4G'. The other end of the cable is attached to the antenna itself.



- Plug one end of the micro USB to USB cable provided into the USB slot on the router, and the other end into the universal power plug provided.
- Do **NOT** connect to the router with another device otherwise you may use up all of your NMEA data.



Note:

The sim card has already been inserted into the router and activated. The router is also pre-configured to work with the both the NMEA gateway and the W2K.

4 Power up the NMEA gateway

- Plug one end of the micro USB to USB cable provided into the USB slot on the NMEA gateway, and the other end into the universal power plug provided.



Note:

The NMEA gateway should **ONLY** be used with the power cable and power adapter provided.

2. Using a third-party Wi-Fi router

A computer is required for this method

3 Connect to the W2K

A. To connect to your W2K you need to use a computer, tablet or mobile device and look for a Wi-Fi device beginning with 'w2k-xxxxxx'. The password for the network can be found on a sticker on both the front and back of the W2K.



B. Open your web browser and type in '192.168.4.1'. The password to login to this panel is 'admin'. Once logged in click on the gear icon on the top right-hand corner of the screen. Then select 'Wi-Fi Client settings', follow the steps, and connect your W2K to an active WiFi connection.



C. Now click on the 'i' on the top right-hand corner. Your settings under Client Status should show connected under your wifi network name. Now write down the 'Client Network IP Address, we will need this later on in the set up.'

Client Status

Client Network SSID:

YS_MARINE_XXXX

Client Network Status:

Connected

Client Network IP Address:

192.168.114.17

Client Network HTTP Port:

8081

Client Network Wi-Fi Signal

Strength:

-37 dBm

4 Power up the NMEA gateway

A. Plug one end of the micro USB to USB cable provided into the USB slot on the NMEA gateway, and the other end into the universal power plug provided.



Note:

The NMEA gateway should **ONLY** be used with the power cable and power adapter provided.

B. Plug one end of the Ethernet cable provided into the NMEA Gateway, and the other end into your Wi-Fi Router. Make sure your Wi-Fi router is ON



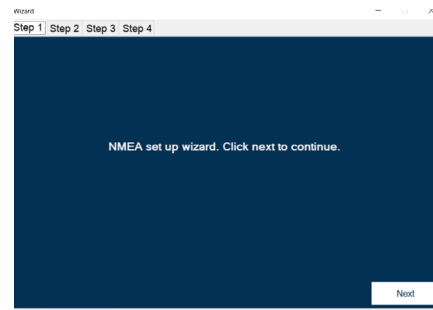
5 Install software

A. Using a computer, visit <https://www.yacht-sentinel.com/downloads> and download the program depending on your operating system (Windows or Mac).

B. Open up the file and install the program. A shortcut called 'Sentinel Domotics set up' will be automatically added to your desktop.

C. Connect your computer to the same Wi-Fi than the NMEA gateway (LAN or WIFI).

D. Open the program, click 'Next' on the wizard and then 'Scan'.



E. A network called 'NMEA-GATEWAY-XXXX' will appear once the scan is completed. Refresh the page if it's not the case.

F. Select this network and type in the username and password shown on top of the NMEA Gateway case.

Contact

If a technical issue persist, please contact us via email at Sales@yacht-sentinel.com or give us a call between 9am and 5pm UK time at **+441932506173**.

Disclaimer

THE USE OF THE SENTINEL DOMOTICS AND ANY ASSOCIATED PRODUCTS – W2K, NMEA GATEWAY, YS WI-FI MODEM - IS AT THE USER'S OWN RISK.

PLEASE VISIT OUR WEBSITE WWW.YACHT-SENTINEL.COM TO REVIEW OUR TERMS AND CONDITIONS.

ALL NEW GOODS SUPPLIED BY YACHT SENTINEL LIMITED AND ITS LICENSED DEALERS HAVE A 12-MONTH WARRANTY FROM THE DATE THE GOOD WERE DELIVERED (UNLESS OTHERWISE STATED). THIS WARRANTY DOES NOT AFFECT YOUR STATUTORY RIGHTS AS A CONSUMER. IF YOUR UNIT DEVELOPS A DEFECT WITHIN THE 12-MONTH WARRANTY PERIOD, PLEASE CONTACT US FOR WARRANTY SERVICE.

PLEASE NOTE THAT THE WARRANTY DOES NOT COVER YOU FOR ANY DEFECTS IN THE GOODS ARISING FROM ABNORMAL WEAR AND TEAR, WILLFUL DAMAGE, ACCIDENT, NEGLIGENCE BY YOU OR ANY THIRD PARTY, USE OTHERWISE THAN IN ACCORDANCE WITH ITS INTENDED USE. FAILURE TO FOLLOW THE MANUFACTURER OR SUPPLIERS' INSTRUCTIONS, OR ANY ALTERATION OR REPAIR CARRIED OUT WITHOUT YACHT SENTINEL LIMITED'S PRIOR WRITTEN APPROVAL WILL VOID THE WARRANTY.

YACHT SENTINEL

