

YACHT  SENTINEL

Accessories

Installation Manual

ENGLISH




Welcome

to the accessories installation manual

This manual will provide everything you need to install and configure your YS PRO accessories. The installation must be completed by a certified electrician or a person with advanced knowledge in boat electronic installation. For more detailed information please visit our help center or reach out to our support team via email or Whatsapp.

Website: www.yacht-sentinel.com

Email: support@yacht-sentinel.com

Whatsapp: +33 7 82 64 64 57 

CONTENTS

IMPORTANT INFORMATION

DISCLAIMERS	5
PRECAUTIONS	5
WARRANTY	5
TECHNICAL ACCURACY	5
PUBLICATION COPYRIGHT	6
FCC STATEMENT	6
IC STATEMENT	6
ISED STATEMENT	6
CE CERTIFICATION	7
ZIGBEE CERTIFICATION	7
ALL RIGHTS RESERVED	7
DISPOSAL	7

DOCUMENT INFORMATION

DOCUMENT INFORMATION	8
COMPLEMENTARY DOCUMENTATION	8
DOCUMENT ILLUSTRATIONS	8

ACCESSORIES GENERAL INFORMATION

COMMUNICATION FREQUENCY	9
Outside of these events, sensors will remain active but won't send data to the YS PRO.	9
PAIRING	9
RESETTING	9

BILGE SENSOR

POWERING	10
PLACEMENT	10
MOUNTING	10
TESTING	10

SMOKE SENSOR

POWERING	11
PLACEMENT	11
MOUNTING	11
TESTING	11

HEAT SENSOR

POWERING	12
PLACEMENT	12
MOUNTING	12
TESTING	12

ENTRY SENSOR

POWERING	13
PLACEMENT	13
MOUNTING	13
TESTING	13

MOTION SENSOR

POWERING	14
PLACEMENT	14
MOUNTING	14

HUMIDITY & AIR QUALITY SENSOR

POWERING	15
MOUNTING	15

SHORE POWER SENSOR

POWERING	16
MOUNTING	16

RANGE EXTENDER

ATTACH THE ANTENNA	17
POWERING	17
PLACEMENT	17
MOUNTING	17

3M MOUNTING

INFORMATIONS ABOUT 3M STICKERS	18
--------------------------------	----

IMPORTANT INFORMATION

DISCLAIMER

Keep away from children.

If a technical issue persists, please contact us:

Email: **support@yacht-sentinel.com**

Whatsapp: **+33 7 82 64 64 57**

The use of YS PRO is at the user's own risk. Please visit our website : www.yacht-sentinel.com to review our Terms and Conditions.

Yacht Sentinel does not warrant that the products are error-free or that they are compatible with products manufactured by any person or entity other than Yacht Sentinel.

Yacht Sentinel is not liable for damages or injuries resulting from your use or inability to use the products, interactions with products manufactured by others, or errors in third-party information used by the product.

YS PRO and its accessories do not guarantee or insure against property damage, theft, injury, or similar incidents. Yacht Sentinel cannot be held responsible if any such events occur.

PRECAUTIONS

Do not remove the products labels as it contains important information.

Do not paint devices.

Leaving a battery in an extremely high temperature surrounding environment can result in an explosion or a leakage of flammable liquid or gas.

A battery subjected to extremely low air pressure may result in an explosion or a leakage of flammable liquid or gas.

Always mount indoors at a temperature between 0-50°C.

When removing cover for battery change, electrostatic discharge can harm electronic components inside.

Do not place accessories close to magnetic or electromagnetic fields.

IMPORTANT: Make sure to turn off power on your boat before installing the shore power sensor and the range extender.

WARRANTY

All new goods supplied by Yacht Sentinel Limited, Yacht Sentinel France and its licensed dealers have a 12 month warranty from the date the goods were delivered (unless otherwise stated). This warranty does not affect your statutory rights as a consumer. If your unit develops a defect within the 12 month warranty period, please contact us for warranty service.

Please be aware that the warranty does not cover defects in the goods resulting from abnormal wear and tear, intentional damage, accidents, negligence by you or any third party, or use outside of its intended purpose. Additionally, failure to follow the manufacturer's or supplier's instructions, or any modifications or repairs performed without prior written approval from Yacht Sentinel Limited or Yacht Sentinel France, will void the warranty.

TECHNICAL ACCURACY

To the best of our knowledge, the information in this document was accurate at the time of publication. However, Yacht Sentinel cannot be held liable for any inaccuracies or omissions. Furthermore, our policy of continuous product improvement may lead

to changes in specifications without notice. Consequently, Yacht Sentinel cannot accept responsibility for any discrepancies between the product and this document. Please visit the Yacht Sentinel website (www.yacht-sentinel.com) to ensure you have the most current version of the documentation for your product.

PUBLICATION COPYRIGHT

Copyright ©2024 Yacht Sentinel France All rights reserved. No parts of this material may be copied, translated, or transmitted (in any medium) without the prior written permission of Yacht Sentinel France.

FCC STATEMENT

Changes or modifications to the equipments not expressly approved by the party responsible for compliance could void the user's authority to operate the equipment.

NOTE: These equipment have been tested and found to comply with the limits for Class B digital devices, pursuant to Part 15 of the FCC Rules. These limits are designed to provide reasonable protection against harmful interference in a residential installation. This equipment generates, uses and can radiate radio frequency energy and, if not installed and used in accordance with the instructions, may cause harmful interference to radio communications. However, there is no guarantee that interference will not occur in a particular installation.

If these equipment do cause harmful interference to radio or television reception, which can be determined by turning these equipment off and on, the user is encouraged to try to correct the interference by one or more of the following measures:

- Reorient or relocate the receiving antenna
- Increase the separation between the equipments and receiver
- Connect the equipment into an outlet on a circuit different

from that to which the receiver is connected

- Consult the dealer or an experienced radio/TV technician for help

These devices comply with FCC RF radiation exposure limits set forth for an uncontrolled environment. The antennas used for this transmitter must be installed to provide a separation distance of at least 20 cm from all persons and must not be co-located or operating in conjunction with any other antenna or transmitter.

These devices comply with part 15 of the FCC Rules. Operation is subject to the following two conditions:

- These devices may not cause harmful interference
- These devices must accept any interference received, including interference that may cause undesired operation

IC STATEMENT

This device contains licence-exempt transmitter(s)/receiver(s) that comply with Innovation, Science and Economic Development Canada's licence-exempt RSS(s). Operation is subject to the following two conditions:

- This device may not cause interference
- This device must accept any interference, including interference that may cause undesired operation of the device

This equipment complies with IC RSS-102 radiation exposure limits set forth for an uncontrolled environment. This equipment should be installed and operated with minimum distance 20 cm between the radiator and your body.

ISED STATEMENT

Innovation, Science and Economic Development Canada ICES-003 Compliance Label: CAN ICES-3 (B)/NMB-3(B).

CE CERTIFICATION

The CE mark affixed to this product confirms its compliance with the European Directives which apply to the product and, in particular, its compliance with the harmonized standards and specifications.

IN ACCORDANCE WITH THE DIRECTIVES:

Radio Equipment Directive (RED) 2014/53/EU

RoHS Directive 2015/863/EU amending 2011/65/EU



ZIGBEE CERTIFICATION



ALL RIGHTS RESERVED

Yacht Sentinel assumes no responsibility for any errors, which may appear in this manual. Furthermore, Yacht Sentinel reserves the right to alter the hardware, software, and/or specifications detailed herein at any time without notice, and Yacht Sentinel does not make any commitment to update the information contained herein. All the trademarks listed herein are owned by their respective owners.

Distributed by Yacht Sentinel France, 56 rue de Paris, 92100, Boulogne-Billancourt, France.

DISPOSAL

Dispose the accessories properly at the end of their life. This is electronic waste which should be recycled.

Disposal of a battery into fire or a hot oven, or mechanically crushing or cutting of a battery, can result in an explosion.

DOCUMENT INFORMATION

DOCUMENT INFORMATION

This document contains important information related to the installation of your YS PRO accessories.

The document includes information to assist you:

- Pair your accessories to the YS PRO
- Reset your accessories
- Test and install your accessories

You can download this document in PDF format from:

www.yacht-sentinel.com/user-manual/accessories

For more information on YS PRO configuration (Accessories management, data sources, WI-FI hotspot configuration, etc.) please refer to the [YS PRO installation manual](#).

COMPLEMENTARY DOCUMENTATION

You may need complementary documentation containing important information about the YS PRO and Sentinel Cam 2.

For the installation and pairing of your YS PRO, please refer to the installation manual. The accessories manual can be downloaded in PDF format from:

www.yacht-sentinel.com/user-manual/ys-pro-installation

For the installation and pairing of the Sentinel Cam 2, please refer to the Sentinel Cam 2 manual. The Sentinel Cam 2 manual can be downloaded in PDF format from:

www.yacht-sentinel.com/user-manual/cam-2

DOCUMENT ILLUSTRATIONS

Your product and its user interface may vary slightly from the illustrations in this document, depending on the product variant and date of manufacture. All images are for illustrative purposes only.

ACCESSORIES GENERAL INFORMATION

BEST PRACTICE & RECOMMENDATIONS

For a successful and easy installation we recommend:

- Always pairing accessories in their final location to make sure that the Zigbee signal is strong enough
- Always pairing the range extender(s) first to extend the Zigbee network before pairing other accessories
- Always pairing the shore power sensor last, to ensure that the other accessories will reach the Zigbee network when the shore power is off (When powered, the shore power sensor also acts as a range extender)

PAIRING

When first powered, all the wireless devices automatically enter in a pairing mode for up to 15 minutes.

A device in a pairing mode can be identified by a flashing led.

If the 15 minutes pairing has exceeded, a short press on the reset button will restart the device.

Once paired with YS PRO, the led will stop flashing.

Once paired with YS PRO, devices won't enter in a pairing mode. To pair them on an other YS PRO, devices need to be reset.

The signal strength of each device is accessible on the YS PRO screen, in "wireless accessories".

[Please refer to the YS PRO installation manual for more information on the YS PRO pairing mode.](#)

RESETTING

1. Power the sensor
2. Press and hold its reset button for approximately 14-16 seconds

While you are holding the button down, the LED first flashes once, then twice, and finally numerous blinks continuously. (key fob LED only flashes after 5 seconds of holding).

3. Release the button while the LED is blinking

After you release the button, the LED shows one long flash, and the reset is completed.

Exception: to reset the range extender please contact Yacht Sentinel support team:

Email: support@yacht-sentinel.com

Whatsapp: +33 7 82 64 64 57

3M STICKERS MOUNTING

Yacht Sentinel sensors are provided with round 3M stickers.

1. Clean the surface.
2. Place the sticking side of the 3M sticker on the accessory and apply a quick pressure on the surface.
3. Remove the wrapping of the 3M sticker and place the accessory where wanted on your boat.
4. Apply a pressure on the accessory to ensure a firm hold. (1 to 5 minutes)

Note: Stickers are for single-use only. Do no reuse a sticker. Change sticker if you wish to reposition a sensor.

BILGE SENSOR

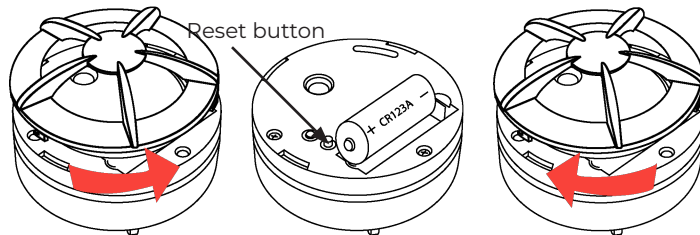
The bilge sensor provides users with an early warning to help reduce potential damage from unusual leaking or pumps dysfunctions in your bilges.

The bilge sensor will notify users about water presence and trigger a 85db siren when water or intrusion is detected.

The bilge sensor will also report the temperature of the room.

POWERING

1. Detach the cover of the sensor by twisting it counter clockwise
2. Pull out the battery isolation strip from the CR123A battery
3. Put the cover back (it only fits one way)
4. Close the casing by twisting it clockwise



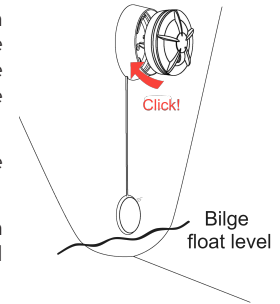
The bilge sensor enters in pairing mode.

PLACEMENT

The bilge sensor is delivered with a 1m probe. We highly recommend using the probe in order to have a more precise water level monitoring and to extend the bilge sensor's life.

The probe must be placed just above the level of the bilge float.

The bilge sensor should be placed as high as possible or in a dry area to be protected from water.



MOUNTING

1. Clean the surface before mounting
2. Use a 3M sticker provided by Yacht Sentinel to attach the probe's base to the surface

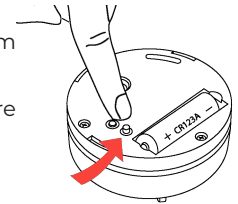
We recommend not fixing the probe on the floor to ensure a better water detection.

We recommend using a drop of glue between the bilge sensor and the probe's base.

TESTING

When pressing the alarm button, the alarm sound should be heard.

Test all of your alarms once a week to ensure they are functioning correctly.



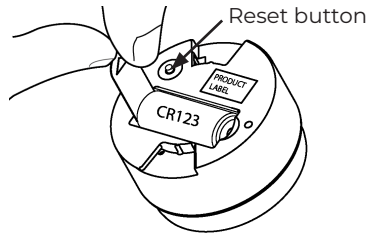
SMOKE SENSOR

The smoke sensor will notify users about smoke and trigger a 85db siren when smoke or intrusion is detected.

The smoke sensor will also report the temperature of the room.

POWERING

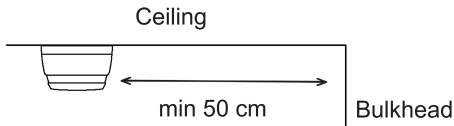
Pull out the battery isolation strip as shown.



The smoke sensor enters in pairing mode.

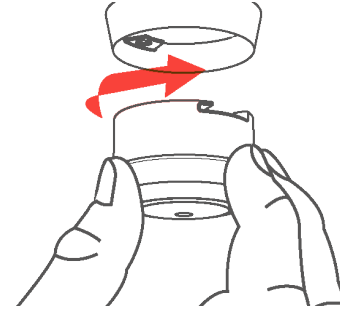
PLACEMENT

The distance between the smoke sensor and bulkheads, ventilation or other obstacles, should be at least 50 cm.



MOUNTING

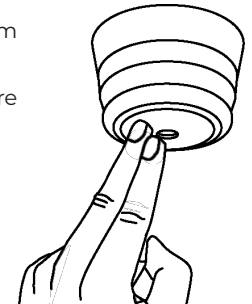
1. Clean the surface before mounting
2. Use a 3M sticker provided by Yacht Sentinel to attach the base to the surface
3. Attach the alarm to the base by twisting clockwise until it clicks



TESTING

When pressing the alarm button, the alarm sound should be heard.

Test all of your alarms once a week to ensure they are functioning correctly.



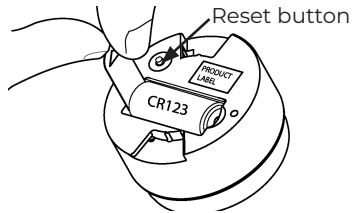
HEAT SENSOR

The heat sensor will notify users about excessive heat (>50°C) and trigger a 85db siren when overheat or intrusion is detected.

The heat sensor may be preferred to the smoke sensor in environment where natural smoke can occurs. For example in the galley (kitchen).

POWERING

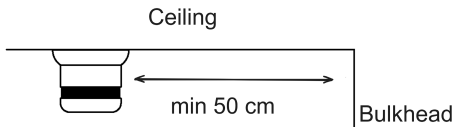
Pull out the battery isolation strip as shown.



The heat sensor enters in pairing mode.

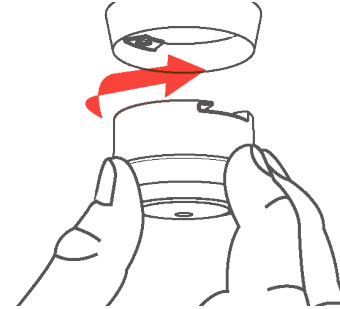
PLACEMENT

The distance between the heat sensor and bulkheads, ventilation or other obstacles, should be at least 50 cm.



MOUNTING

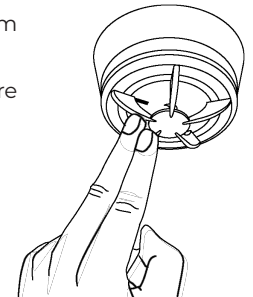
1. Clean the surface before mounting
2. Use a 3M sticker provided by Yacht Sentinel to attach the base to the surface
3. Attach the alarm to the base by twisting clockwise until it clicks



TESTING

When pressing the alarm button, the alarm sound should be heard.

Test all of your alarms once a week to ensure they are functioning correctly.



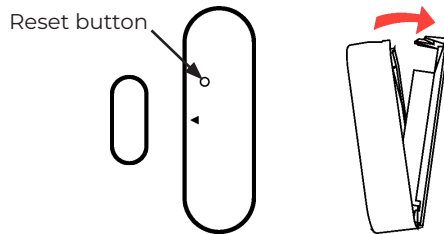
ENTRY SENSOR

The entry sensor detects and reports opening and closing of doors, windows or hatches. It is an effective way to detect an intrusion in your boat cabin.

The entry sensor will also report the temperature of the room.

POWERING

1. Open the casing of the device by pushing the fastening on top of the device to remove the front panel from the back cover
2. Insert the enclosed batteries in the device, respecting the polarities and close the casing



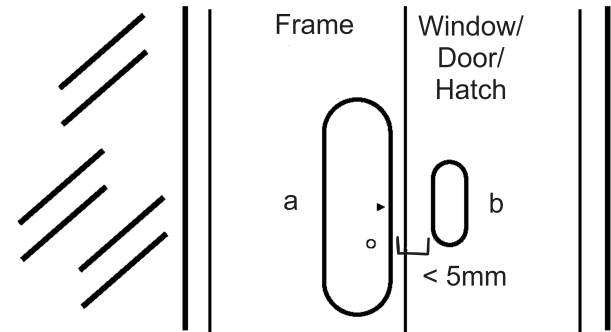
The entry sensor enters in pairing mode.

PLACEMENT

The magnet has to be placed on the side of the sensor which is marked with a small triangle. The magnet and sensor also have to be aligned/centered thickness-wise on as similar level as possible.

MOUNTING

1. Clean the surface before mounting
2. The entry sensor (a) should be mounted to the frame using the double stick tape, already applied on the back of the sensor and magnet. Press firmly to secure sensor
3. The magnet (b) should be mounted on the door, window or hatch no further than 5mm away from the arrow on the sensor.



There are many ways to mount the sensor and magnet, as doors, windows or hatches vary greatly. The most important consideration is for the magnet to be placed as near to the point on the sensor indicated by the small triangle.

TESTING

You can test if the positioning of the sensor and magnet are correct by checking whether the green light on the entry sensor is flashing when you open or close the door, window or hatch.

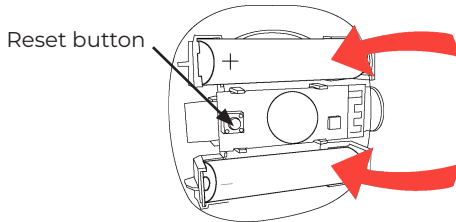
MOTION SENSOR

The motion sensor detects and reports a presence in the room allowing the users to get alerted in case of an intrusion.

The motion sensor will also report the temperature of the room.

POWERING

1. Open the casing of the motion sensor by pushing the switch and pulling the top of the casing
2. Insert batteries respecting the polarities



The motion sensor enters in pairing mode.

PLACEMENT

Place the motion sensor in a location with a clear view of the monitored area and the windows. Avoid placing the Motion Sensor in direct sunlight or bright light.

The motion sensor as a angle detection view of 45°, if possible, we recommend installing the sensor with the bracket in a corner of the room, at the angle between a bulkhead and the ceiling in order to cover a wider area of the room.

MOUNTING

The motion sensor can be mounted flat on the wall or using the magnet and the corner bracket.

1. Clean the surface before mounting
2. Use a 3M sticker provided by Yacht Sentinel to attach the base to the surface

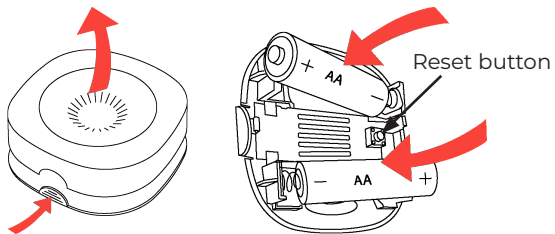
HUMIDITY & AIR QUALITY SENSOR

The humidity sensor provides information about the humidity and temperature of the room.

The air quality sensor provides information about the volatile organic compound (VOC) levels, humidity and temperature. It will help you ensure that the air inside the room is clean and healthy.

POWERING

1. Open the casing of the humidity/air quality sensor by pushing the switch and pulling the top of the casing
2. Insert batteries respecting the polarities



The humidity/air quality sensor enters in pairing mode.

MOUNTING

1. Clean the surface before mounting
2. Use a 3M sticker provided by Yacht Sentinel to attach the humidity/air quality sensor to the surface

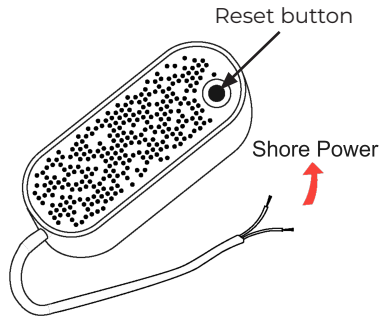
SHORE POWER SENSOR

The shore power sensor is able to detect an interruption of a 110V/230V electrical circuit, warning you if the shore power of your boat has been cut off.

IMPORTANT: The installation implies connecting the device on a high tension circuit. This installation must be done by a certified electrician. Make sure that shore power is off before installing the sensor.

POWERING

Plug the two cables (regardless of the order) on the shore power circuit of your boat. The location of the shore power circuit depends of each boat, you may need to contact your boat manufacturer to proceed.



Once plugged, the shore power sensor enters in pairing mode.

MOUNTING

1. Clean the surface before mounting
2. Use a 3M sticker provided by Yacht Sentinel to attach the shore power sensor to the surface

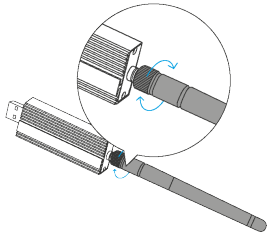
RANGE EXTENDER

The range extender expands the range of your zigbee network and makes it possible to add more devices. Multiple devices can benefit from the network extension of one range extender

IMPORTANT: The installation of the range extender implies connecting the device to the electrical circuit. This installation must be done by a certified electrician. Make sure that power is off before installing the sensor.

ATTACH THE ANTENNA

Screw the antenna to the range extender.



POWERING

1. Plug the range extender (USB male) to the DC Converter (USB female) provided by Yacht Sentinel
2. Wire the Converter to the boat circuit (12, 24 or 48V)
3. We recommend wiring the range extender to a circuit always powered by the main battery

Once wired, the range extender enters in pairing mode.

PLACEMENT

The signal strength of the range extender is shown on the YS PRO screen. This will help you placing the range extender in order to cover a new area of the boat as well as keeping a good signal strength with the YS PRO.

MOUNTING

1. Clean the surface before mounting
2. Use a 3M sticker provided by Yacht Sentinel to attach the range extender to the surface

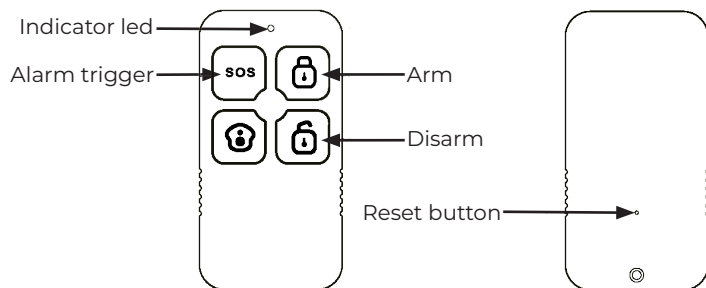
KEY FOB

The key fob allows you to arm and disarm the YS PRO security system. It also allows you to trigger the sirens included in your other sensors.

POWERING

Pull out the battery isolation strip from the keyfob.

The key fob enters in pairing mode.



ENJOY A SAFE BOATING EXPERIENCE

YACHT SENTINEL TEAM



YACHT  **SENTINEL**